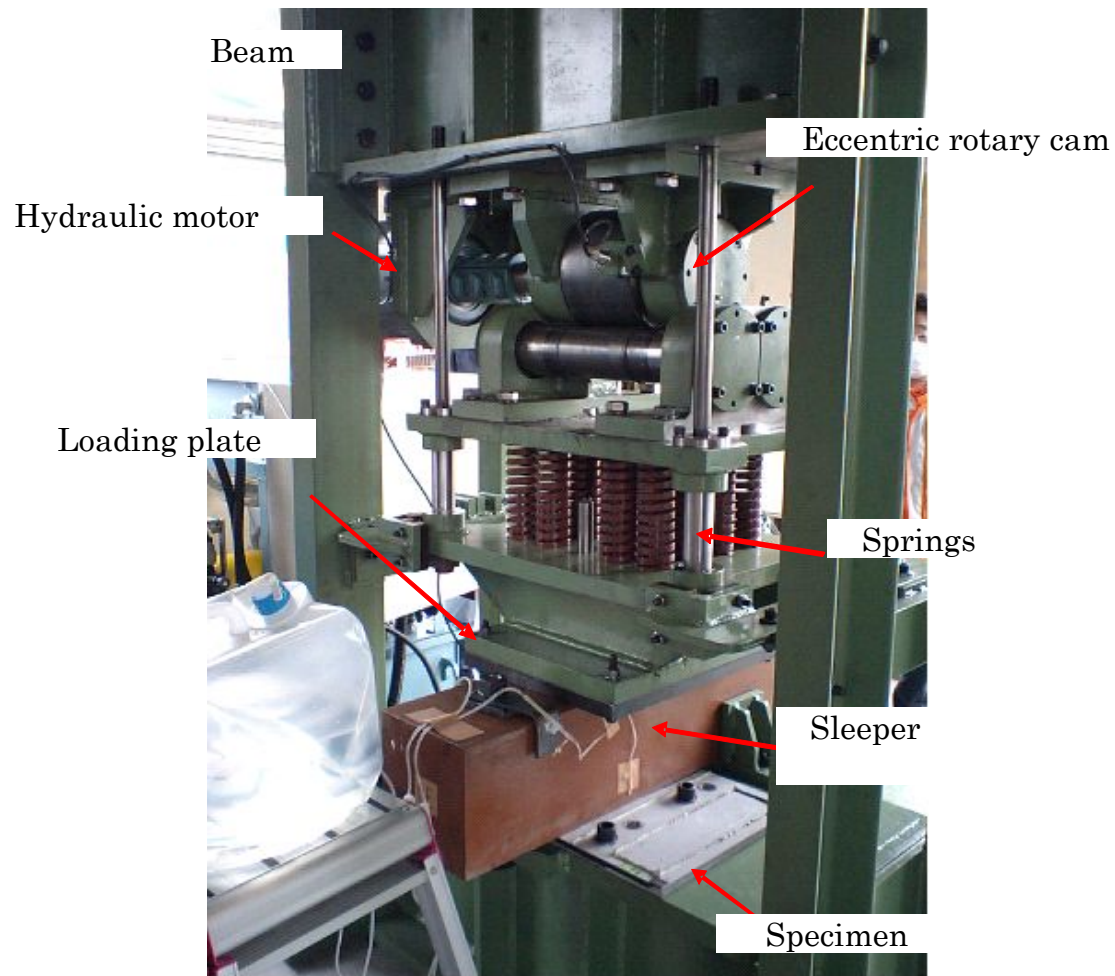
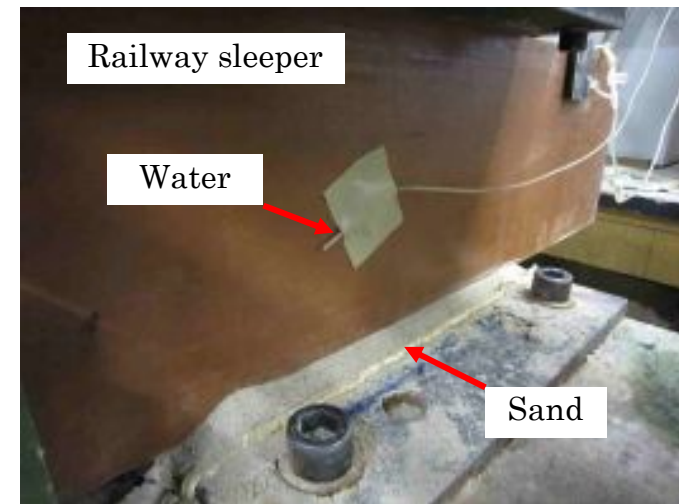


Specially developed testing machine

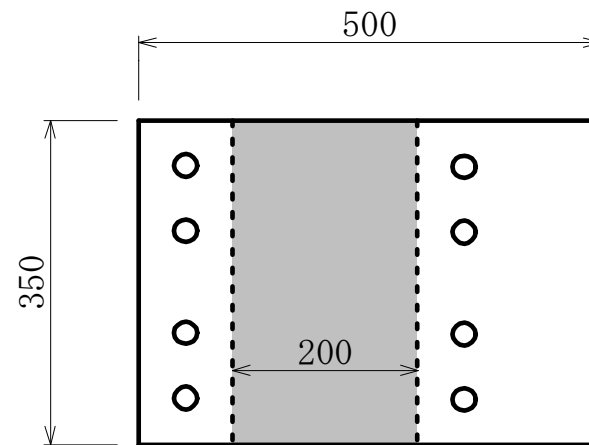


Load amplitude: 88 kN
Max. Load : 108 kN
Min. Load : 20 kN

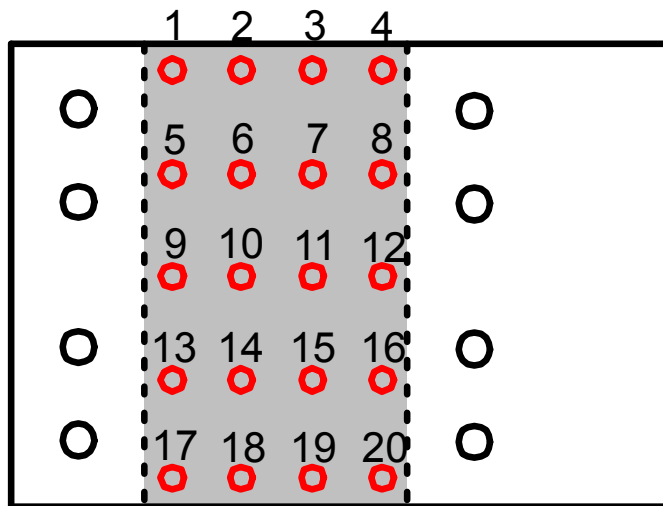


Water : 50 mL/min
Sand : Silica sand
(less than 0.6 mm)

Specimen size

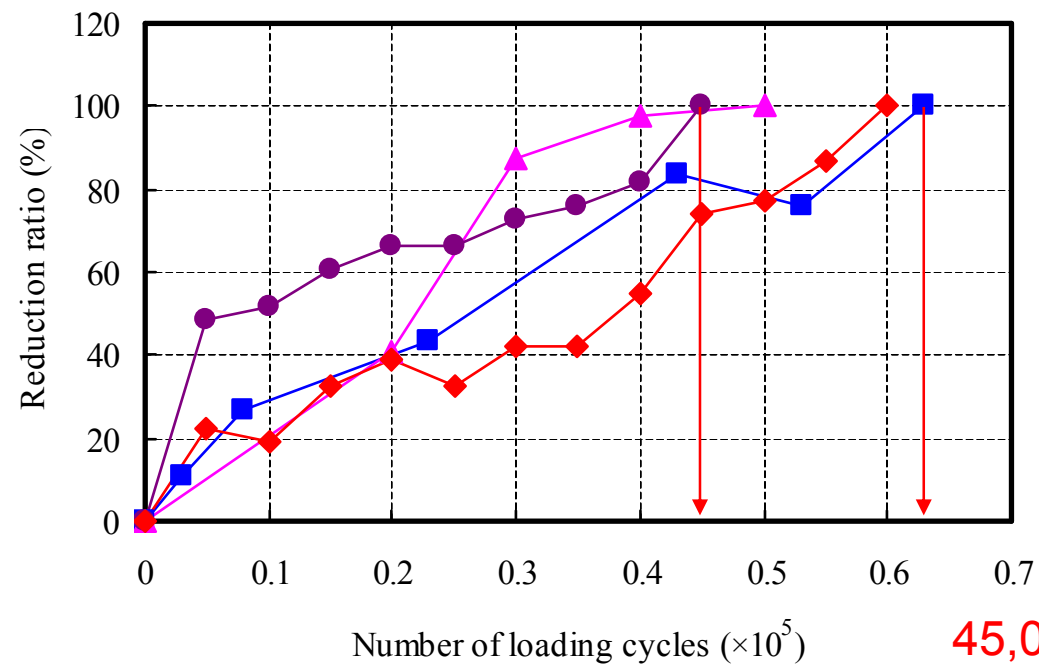
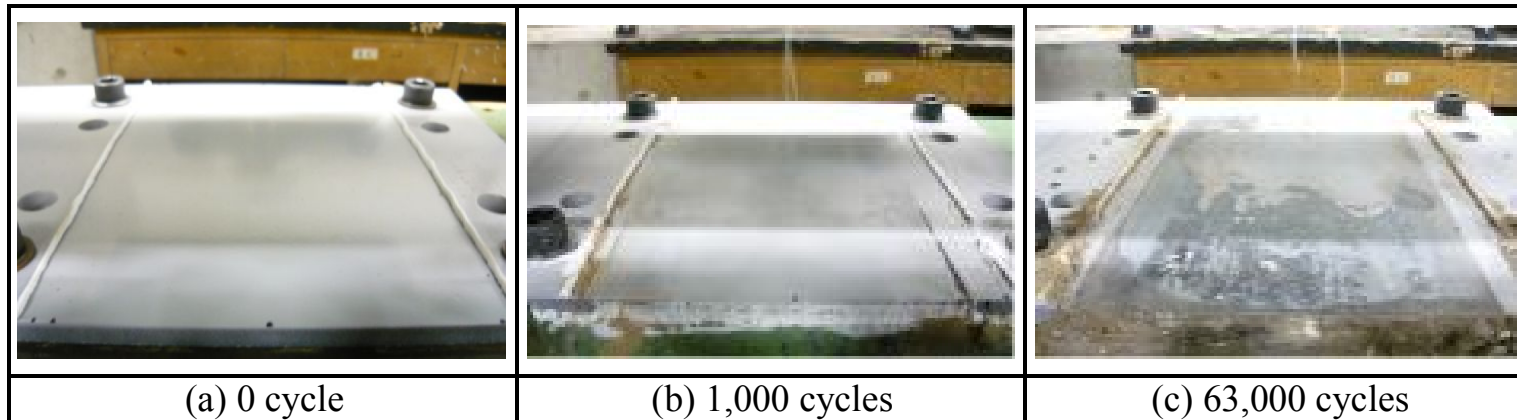


Measuring positions for coating thickness



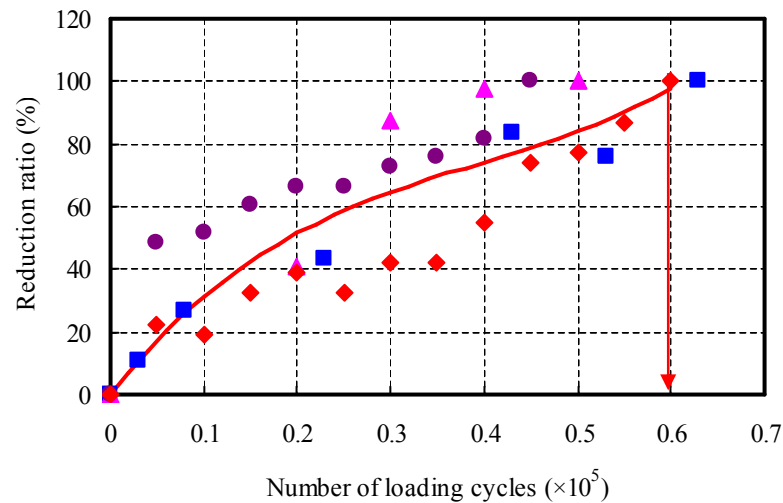
Electromagnetic coating thickness tester

B-7 paint coating

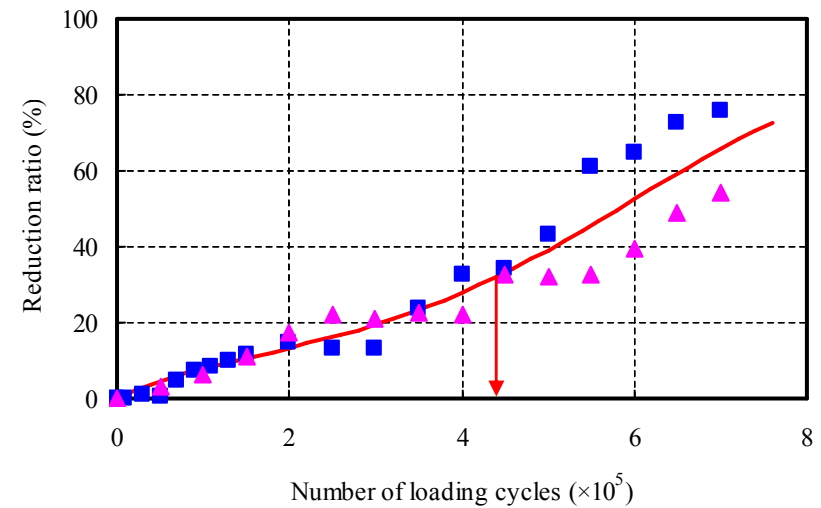


45,000~63,000 cycles

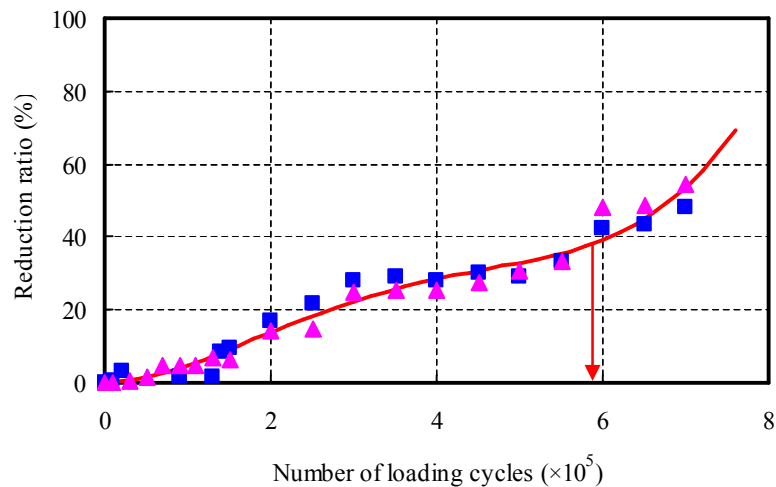
Curve fitting



B-7 paint coating



Epoxy coated glass fiber sheet



Epoxy coated carbon fiber sheet

B-7 paint coating

$$y = 612.719x^3 - 725.423x^2 + 377.832x$$

Epoxy coated glass fiber sheet

$$y = -0.051x^4 + 0.791x^3 - 3.180x^2 + 10.296x$$

Epoxy coated glass fiber sheet

$$y = 0.111x^4 - 1.431x^3 + 5.569x^2 + 0.598x$$

y : reduction ratio (%),

x : number of loading cycles ($\times 10^5$)